

Tackling OASIS D

The interdisciplinary team approach to increasing OASIS outcomes



Dates and Times

Tues., December 11 –

Wed., December 12, 2018

Sign-In: 8:30 to 9:00 am

Conference: 9:00 am to 4:30 pm

Lunch: Noon to 1:15 pm

Location

Bluemont Hotel

1212 Bluemont Avenue

Manhattan, KS 66502

(785) 473-7091

Registration Fees

KHCHA Members – \$220

Non-Members – \$440

Target Audience

HHA Administrators, Clinical Managers, QAPI Coordinators, ALL clinicians performing OASIS, and all members of the interdisciplinary team.

CNE Credit

Kansas Home Care & Hospice Association is approved as a provider of CNE by the Kansas State Board of Nursing. This course offering is approved for **13.8** contact hours applicable for APRN, RN, or LPN relicensure. Kansas State Board of Nursing provider number: LT0287-0314.

Program Abstract

OASIS D goes into effect January 1, 2019. This seminar will carefully review the OASIS D data set, with major focus on the new items. These new D items, due to the IMPACT act – which is standardizing data for all post acute care providers – is very detailed, long and specific, particularly the difficult GG functional ability and goals. Utilizing CMS training and Medicare OASIS manual, the presenters will clarify and explain the OASIS D data set.

We will review all OASIS D items that count towards the 5 Star Ratings and Value Based Purchasing, vital to the long term viability of the home health agency. The focus will show that the CORE of home health is the OASIS assessment that the clinicians perform.

In order to have the most accurate OASIS scoring and improved outcomes, the methodology and consistency of all clinicians while assessing patients is key. These strategies will be reviewed in depth. With a major focus on how the multi-disciplinary team caring for a patient must work towards improving patient outcome and coordinate care throughout the patient's home health course of care. This ends with the Discharge OASIS assessment which must be performed by the clinician in that same manner in order to accurately answer the OASIS items and increase patient outcomes.

Program Objectives

- Explain the reasons behind the major changes in OASIS D due to the IMPACT ACT, as well as all of the overall changes
- Examine the NEW items in OASIS D – GG Functional ability and Goals; JJ Fall Items
- Review all OASIS items that go towards 5 Star Ratings and Value Based Purchasing
- Outline the correct assessment methodology, as well as guidance /intent and specific instructions for all outcome related OASIS items
- Demonstrate how to work as a part of the multidisciplinary team for your patient in order to assess/answer OASIS items, improve outcomes for your patient and agency, and be in compliance with the NEW CoPs as well as OASIS D
- List each OASIS timepoint and assessment variations and consistencies required to have integrity, accuracy and improve OASIS outcomes
- Demonstrate teach back of OASIS assessment and scoring including GG items, resulting in increased outcomes

Materials

Handouts will be made available online prior to the conference. **Participants will be required to print and bring a copy of the handouts with them to the conference.**

Lodging

The Bluemont Hotel in Manhattan has reserved a block of rooms at the special KHCHA rate of **\$93 per night** (single and double, tax not included). The room block will be held until **November 12, 2018**.

Reservations may be made by calling the hotel directly at (785) 473-7091 and asking for the Kansas Home Care & Hospice Association group rate. Reservations made after the cut-off date will be accepted on a space or rate available basis.

Questions?

Contact Kristen Ada,
KHCHA Director of Programs &
Member Services
(913) 669-0460 or
kada@kshomecare.org

Brought to you by...

**Kansas Home Care & Hospice
Association**
P.O. Box 67203
Topeka, KS 66667
(785) 478-3640
Fax: (888) 208-0220

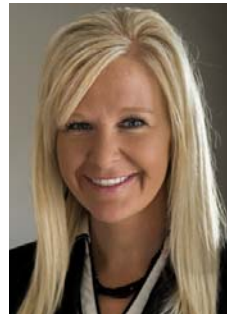


Speakers



Sharon M. Litwin, RN, BSHS, MHA, HCS-D, Senior Managing Partner, 5 Star Consultants, LLC

Sharon Litwin is a founder and senior managing partner of 5 Star Consultants, a national consulting and education firm specializing in homecare services. She is an RN, with a Bachelor's in Health Science and a Master's in Health Administration. Sharon has been in the homecare industry for over twenty-five years. Prior to founding 5 Star Consultants fourteen years ago, she was executive director of the homecare services division for the Sisters of Mercy St Louis division. Sharon is also a former ACHC surveyor, and a former CHAP surveyor, performing Medicare deemed surveys. In her consulting firm, she assists agencies in providing quality, meeting regulations, and achieving financial viability.



Missy (Melissa) Abbott, RN, MSN/MHA, COS-C, Clinical Home Health & Lead Hospice Consultant, 5 Star Consultants, LLC

Melissa "Missy" Abbott is a registered nurse with experience in a variety of health care settings. Prior to joining 5 Star Consultants in 2017 as a home care and lead hospice consultant, she was a field clinician and an administrator of a hospital-based home health and hospice agency. An advocate for home health and hospice, Missy has served on the boards of the Iowa Alliance in Home Care and the Hospice and Palliative Care Association of Iowa since 2014. She has been a featured presenter at state conferences, and is passionate about individual coaching, team building, and leadership development.

Registration Information

Registrations should be made online... [click here](#) to register.

Fees:

KHCHA Members – \$220/person; Non-Members – \$440/person

The registration fee includes breaks and [online access to handouts](#). Lunch will not be served. Attendees may go off-site to one of the many nearby restaurants.

Registration Deadline: Tuesday, December 4, 2018. A confirmation e-mail will be sent upon receipt of registration.

Cancellations: Refunds, less a \$25 processing fee, are available for cancellations received by December 4. No refunds will be given for cancellations received after December 4. No-shows will be held responsible for payment.

KHCHA greatly appreciates the time and effort on the part of our speakers/vendors in providing information for our attendees. The Kansas Home Care & Hospice Association feels an obligation to present the widest possible viewpoints represented in the home care and hospice arena. However, the participation of any speaker/vendor/product in our presentations does not constitute an endorsement by this association. As always, you are strongly advised to seek further counsel and exercise diligence in making any decisions that affect your business or the quality of services you provide.